



Facilities Update

Fit for the Mission

preparing our facilities and ourselves for Evangel's 50th Anniversary

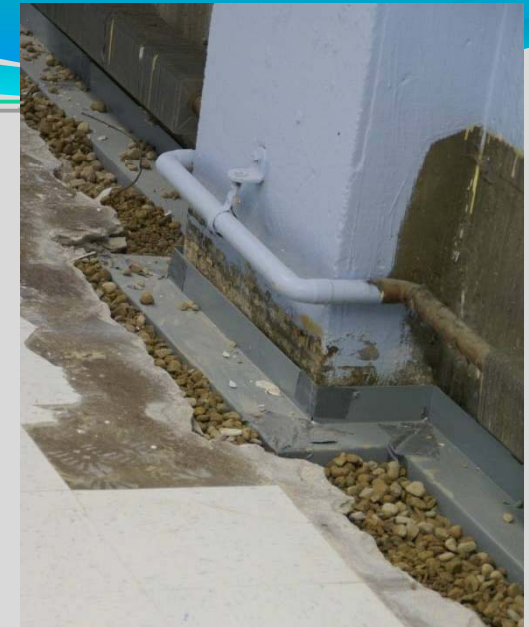
Phase 1—Air Conditioning



Cost: Approx \$10,000 – covered by Fit for the Mission funds given in 2007

Major Maintenance

Basement Waterproofing



Perma-Seal (\$7,768)
Electric for sump pump (\$1,100)
GutterMaster (east side only, \$2,575)
Window well covers (\$1,580)
Replace tile (\$2,500)
Total: approx \$15,500

Major Maintenance

Other Projects

Replace toilet in women's restroom (\$1,200*)

Replace electric line to outside lights (\$600)

*originally part of FFM Phase II, but became emergency need



Still planned for 2008:

Replace window by west entrance (\$3,300)

Late 2008 or early 2009:

Replace west entrance door (\$2,250)

Where we go from here

Costs of major maintenance projects:

\$17,300 total (\$20,600 with window) will nearly deplete fund

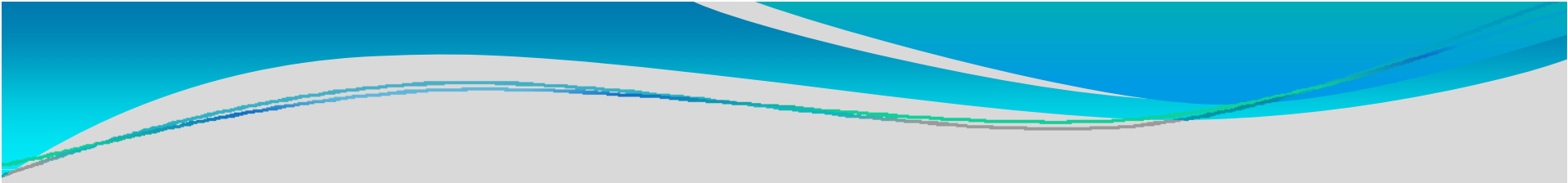
Funding for Phase 1 of Fit for the Mission:

In hand from 2007

Funding toward completion of Phase 1 and move into Phase 2:

More than \$10,000 has come in since January 1 - much of it last week!

We need to build up our Major Maintenance fund before moving ahead



**Despite large unexpected costs
and critical work yet to be accomplished,
we must say,
“Praise God, from whom all blessings flow!”**